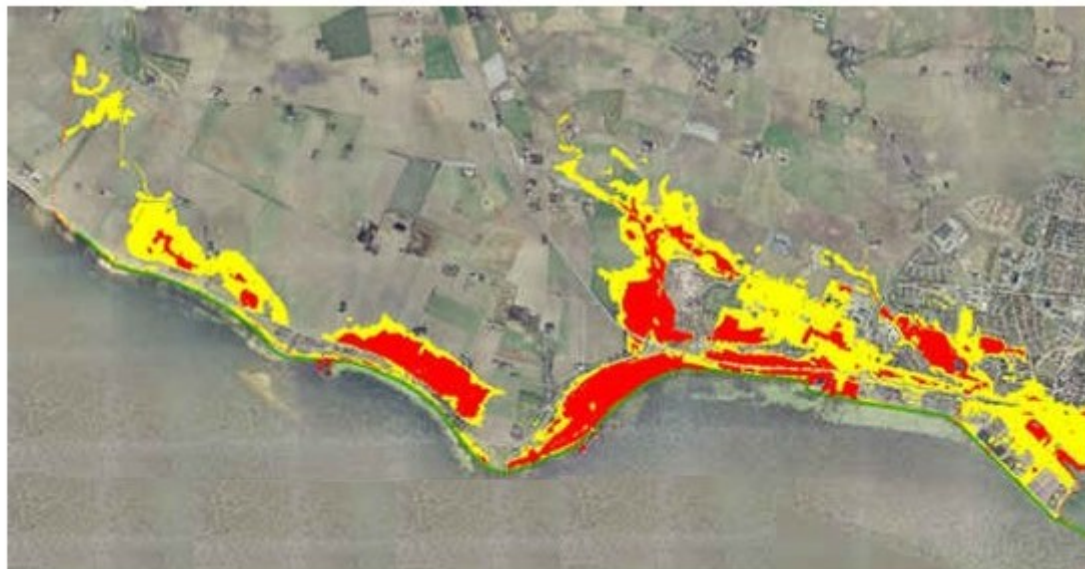

Location	Trelleborg
Type of project	Coastal Study
Client	DHI Sweden for the Trelleborg Municipality



Description

Coastal study for Trelleborg Municipality. Baseline coastal description, establishment of littoral drift budget, description of coastal erosion conditions and influence of sea level rise on erosion and coastal flooding. Description of possibilities for establishing a beach park west of Trelleborg Port. Modelling of water quality conditions along the coast.

The figure shows areas which will be flooded for a storm surge event with 50 years recurrence for the present sea level conditions (red) and for the conditions in year 2100 (yellow).