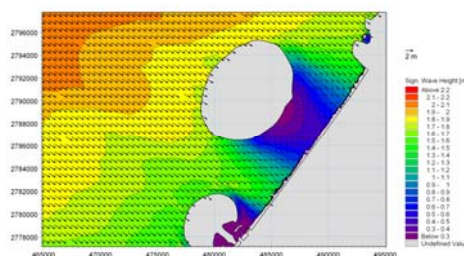
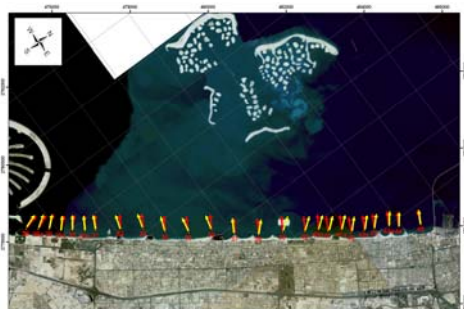


<b>Location</b>	Dubai, U.A.E.
<b>Type of project</b>	Development of shoreline management schemes, procedures and guidelines
<b>Client</b>	Dubai Municipality, Coastal Management Section



**Description**

The objective of the project was to provide assistance to Dubai Municipality (DM) for the management of the 72 km Dubai coastline in the future, including the development of a set of guidelines. The Dubai coastline has recently been and still is undergoing considerable changes primarily due to the recent construction of major coastal and offshore development schemes such as the Palm developments (ie Jumeirah, Jebel Ali and Deira) and the World Islands. At the same time there is an increasing pressure on and demand for beaches and beach amenities due to the rapid growth in tourism as well as in the population of Dubai. This called for the development of a set of guidelines, whereby controlled and sustainable developments of and along the coastline can be secured in the years ahead.

Unique comprehensive hydrodynamic, wave and shoreline modelling was carried out to determine the present and future equilibrium conditions under which the coast must sustain. Proposals for mitigation measures in the form of immediate and long-term shoreline development schemes were developed. Furthermore, risk for erosion and flooding and setback line analyses were carried out including the impact of future Sea level Rise.

The institutional and legislative framework for coastal management in Dubai was analysed and a set of new policies was proposed as part of the provision of management tools.

The key project findings and recommendations were developed into a Management Guideline for the Dubai Coast to assist not only DM but also the multitude of public and private stakeholders concerned with the coastline of Dubai.

The comprehensive amount of data developed and collated by the project was supplied to DM in the form of a GIS system and to a large extent made available via a web site operated by DM.

